

EVAPORATIVE COOLERS



Contents

Introduction	1
RPA Series: medium to large installations	2
RPB Series: medium to very large installations	3
RPCQi Series: small to medium installations	4

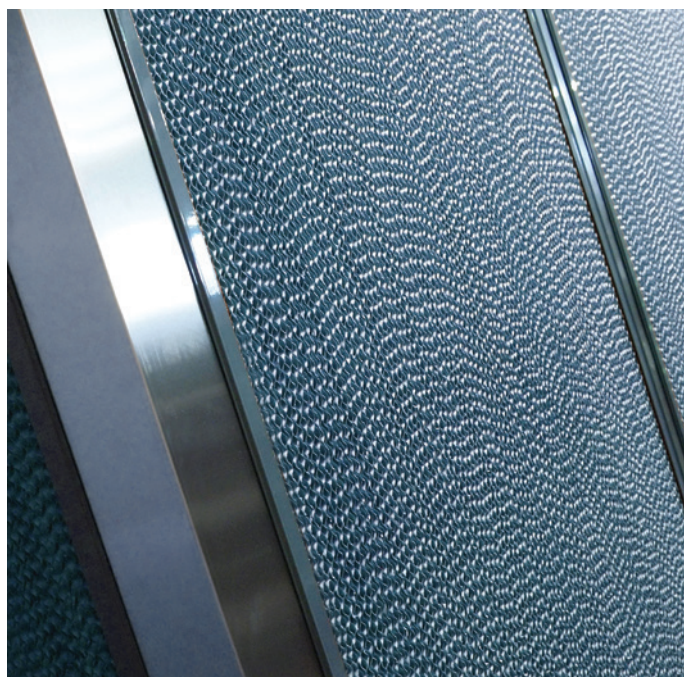
Evaporative Coolers

Celmec International **Leading the way in Air Control, Heating & Cooling**

At Celmec International, it is our belief that working closely with our clients aids the mutual success of both organisations and for this reason we have adopted the following mission:

“To excel in the commercial and industrial building industry by setting new standards with innovative products through leadership, first class customer service and engineering excellence.”

It is with confidence that we at Celmec International offer the Braemar Evaporative Coolers as part of our Coolheat range.



Evaporative Coolers - RPA Series

RPA Series Medium to Large Installations

Braemar Commercial

Cabinet

Constructed from mill finish marine grade aluminium for longevity and strength. The RPA is available in down, side and top discharge configurations. (RPA500 - down discharge only).

Fan Wheel

The Fan wheel is a double inlet, multi-blade, forward curve, centrifugal type. Constructed from galvanised steel, the wheel is statically balanced and the blower shaft is resilient mounted in metal housing with self aligning, single row ball bearings.

Water Reservoir

Rotational moulded in polyethylene to provide corrosion free long life and durability. Automatic water dumping is optionally available.

Fan Motors

Tropic proofed two speed motors fitted as standard. Three phase coolers have manual re-set overload for added safety. Single phase coolers (RPA400) use resilient mountings.

Water Connection

Industry standard connections (1/2 Inch BSP) make installation quick and easy.

Filter Pads

Aspen Fibre or Chillcel® is available on selected models throughout this series to provide optimum choice and extended trouble free operation. Filter pad frames are manufactured from powder coated aluminium and fitted with ABS plastic louvres to enhance appearance and improve performance. Braemar filter pads are designed and manufactured to maximise cooling effect.



Model No.	RPA400	RPA450	RPA500
Dimensions (mm)			
Height	1170	1170	1170
Width	1145	1145	1145
Depth	1145	1145	1145
Airflow Capacity (liters per second)			
High Speed	4100	4420	4760
Low Speed	2500	2920	3050
Fan Motor			
Kw	1.1	2.5	2.5
Phase/current (amps)	1/7.1	3/4.3	3/5.0
Full load current (amps)	7.65	4.80	4.80
Controller Type	All coolers available with 2 speed controller only		

Evaporative Coolers - RPB Series

RPB Series Medium to Very Large Installations

Braemar Commercial

Cabinet

The RPB's cabinet is constructed from marine grade aluminium, incorporating channel section corner pillars, mounted on a heavy gauge base frame for structural stability. Numerous components powder coated for extra corrosion protection. Available in Down, Side and top discharge. Stainless Steel cabinets are also available.

Fan Wheel

The Fan wheel is a double inlet, multi-blade, forward curve, centrifugal type. Constructed from galvanised steel, the wheel is statically balanced. The blower shaft on the RPB1200 to 1800 models is mounted in plummer blocks with self aligning, single row ball bearings. RPB 600-1000 models have a stainless steel shaft to ensure easy service and long life. Mounted in metal housings with self aligning single row ball bearings.

Water Reservoir

Rotational moulded in polyethylene to provide corrosion-free durability. Enhanced water distribution ensures an even water distribution and improved efficiency. Automatic water dumping is optionally available.

Fan Motors

Tropic proofed two speed motors with high temperature cut-out are fitted as standard. All coolers are three phase and have manual re-set overload for added safety.

Water Connection

Industry standard connections (1/2 Inch BSP) make installation quick and easy.

Filter Pads

Chillcel® pads on all models. Two piece pad frames for easy and safe maintenance when servicing. Two piece pads ensure a more efficient and even pad saturation. 10 year guarantee on pad frames. Braemar filter pads are designed and manufactured to maximise cooling efficiency.



Model No.	RPB600	RPB700	RPB900	RPB1000	RPB1200	RPB1300	RPB1400	RPB1500	RPB1800	
Dimensions (mm)										Down & Top Side
Height	1510	1510	1510	1510	1855	1855	1855	1855	1855	1855
Width	1520	1520	1520	1520	2030	2030	2030	2030	2030	2030
Depth	1520	1520	1520	1520	2030	2030	2030	2030	2030	2030
Airflow Capacity (liters per second)										
High Speed	5900	6450	8810	9800	11400	12750	14080	15050	17690	16300
Low Speed	4360	4600	6000	6625	6625	8545	9435	10005	12052	11890
Fan Motor										
Kw	2.2	2.3	5.5	5.5	4.0	5.5	7.5	10	15	15
Phase/current (amps)	3/4.3	3/4.7	3/8.5	3/11.7	3/8.5	3/11.7	3/16.2	3/18.5	3/26	3/26
Full load current (amps)	4.8	5.2	9	12.7	10	13.2	17.7	20	28	28
Controller Type	All coolers available with 2 speed controller only									

Evaporative Coolers - RPCQi Series



For small – medium commercial and light industrial cooling applications

No belts and pulleys - easy maintenance

90mm pads improve cooling performance and saturation



Cabinet

- Constructed from powder coated marine grade aluminium for strength and durability.
- Well suited for direct on-duct mounting for economical and unobtrusive down discharge installations.
- Bottom, side and top discharge available on all units.



Fan wheel

- Double inlet, multi-blade, forward curve, centrifugal type.
- Constructed from polypropylene, the wheel is statically balanced.



Fan motors

- Efficient and quiet direct drive inverter motor - allowing for easy commissioning.



Water management

- Rotational moulded in polyethylene to provide corrosion free long life.
- Patented water distributor maximises cooling efficiency by ensuring a continuous and balanced flow of water across the cooling pads.
- Industry standard connections (½ inch BSP) make installation quick and easy.



Optional extras

- Controller options: MagIQtouch® controller, MagIQtouch® Radio Frequency controller, BMS compatibility, Wi-Fi compatibility*, air sensor and link module are all optional upgrades.
- Choice of Aspen or BlackMagic™ ChillCel™.
- Unit supplied standard in grey. A range of custom colours are available.
- WaterManager™ system ensures optimum machine life with minimum maintenance.

		RPCQi75 Black Magic™ ChillCel™		RPCQi150 Black Magic™ ChillCel™		RPCQi75 Aspen		RPCQi150 Aspen	
Discharge	Discharge Type	Down & Top	Side	Down & Top	Side	Down & Top	Side	Down & Top	Side
Airflow capacity at 80Pa	High Speed (L/sec)	2130		2560		2120	2070	2500	2530
Fan motor	kW / Current (Amps)	0.75 / 5.8		1.5 / 9.0		0.75 / 5.8		1.5 / 9.0	
Control type	Multiple control options available - refer to page 4. Water bleed system.								
Dimensions	H x W x D (mm)	1170 x 1170 x 1120							
Weight	Operating / Shipping (kg)	70 / 118							

*Requires MagIQtouch® wall control, MagIQtouch® Wi-Fi smart kit and MagIQtouch® account to operate.



Melbourne — HQ
19 Simpson Street,
Moorabbin VIC 3189
T +61 3 8552 8200

Sydney
401/460 Pacific Hwy,
St Leonards NSW 2065
T +61 2 8436 7200

celmec.com.au
info@celmec.com.au